



THE BEST PUMPING SOLUTIONS, FOR
YOUR SANITARY APPLICATIONS

CB+ & QCB+ SERIES

BREWING SOLUTIONS



www.q-pumps.com

1220 Bammel Rd. Houston, Tx 77073
+1 (614) 966 81 50 | +1 (281) 728 62 52

CRAFT BREWING APPLICATIONS SERIES



CB+ SERIES

Same technology as other brands and manufacturers.

QCB+ SERIES

100% sanitary internal seal

Based on the **QC+ Series** featuring an *internal balanced sanitary mechanical seal* designed to keep seal faces cool and minimize product buildup.

Its internal balanced design keeps it pressurized to minimize product buildup, to cool and lubricate with the same fluid being pumped.



QC+216 SS N18

IDEAL FOR PUMPING
WORT AT TEMPERATURES
NEAR BOILING



If flashing occurs between seal faces, its design will avoid seal wear and solids to build up between the faces preventing leakage.

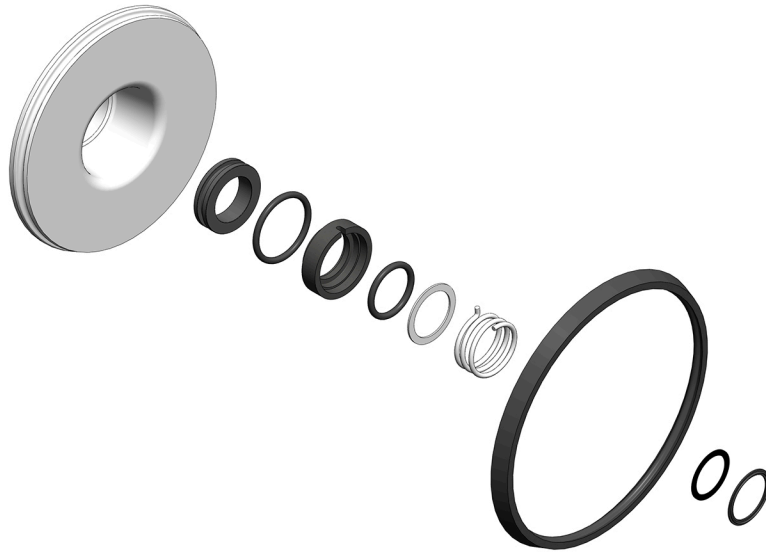
The **CB+ and QCB+ Pumps** are dimensionally and hydraulically *interchangeable with the QC, QC+ and any competitor C Series pump.*

Also **available as centrifugal cart assemblies**, a very versatile option for the craft brewing industry.

AVAILABLE CONVERSION KITS

K6

Converts any QC+ into a CB+ with and Internal balanced mechanical seal, a backplate replacement, casing gasket, impeller plus gasket and nut plus gasket.



K6-SK

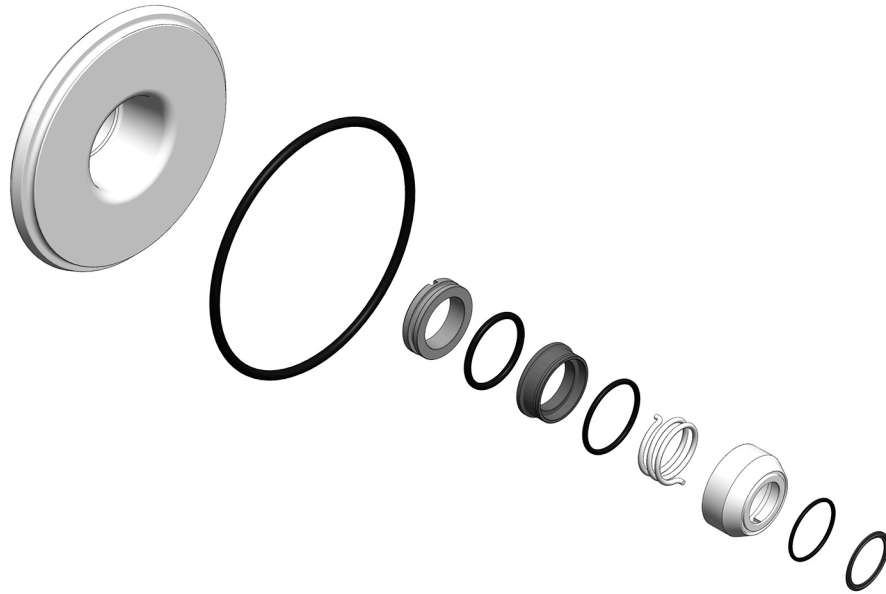
Service kits for a CB+. Includes complete seal kit, casing gasket and impeller plus gasket and nut plus gasket.



AVAILABLE CONVERSION KITS

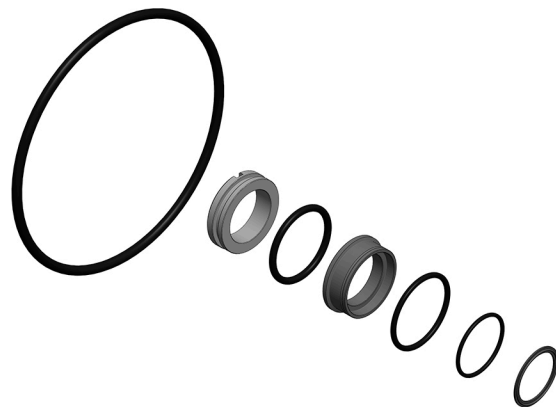
K5

Converts any QC+ into a QCB+ with an improved Internal balanced mechanical seal to meet 3A standards with no exposed spring, a backplate replacement with an o-ring for better sealing and nut plus gasket.



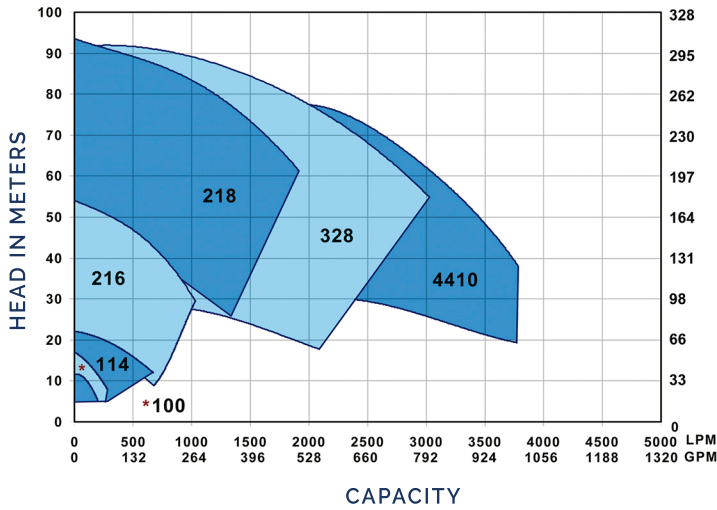
K5-SK:

Service kits for a QCB+. Includes worn seal parts and o-rings, casing o-ring and nut plus gasket.

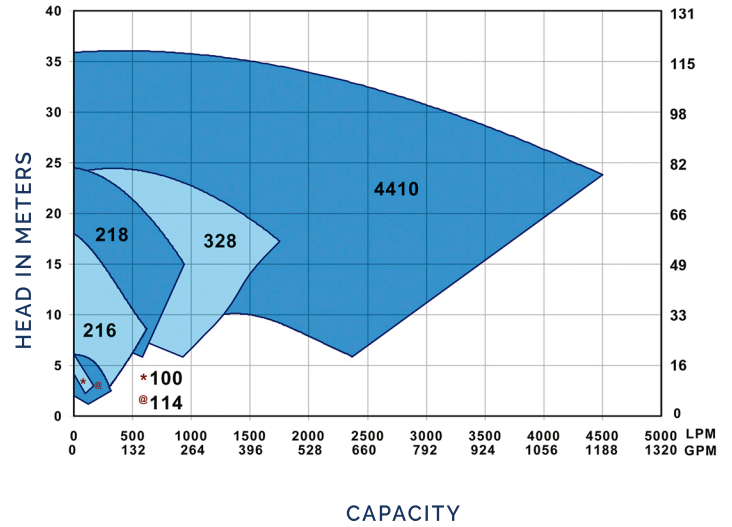


CURVES

3500 rpm



3500 rpm



MODEL		INLET		OUTLET		MAX IMPELLER	
QCB+114	CB+114	1.5"	DN40	1.5"	DN40	4.0"	101.6 mm
QCB+214	CB+214	2.0"	DN50	1.5"	DN40	4.0"	101.6 mm
QCB+216	CB+216	2.0"	DN50	1.5"	DN40	6.0"	152.4 mm
QCB+316	CB+316	2.5"	DN65	1.5"	DN40	6.0"	152.4 mm
QCB+218	CB+218	2.0"	DN50	1.5"	DN40	8.0"	203.2 mm
QCB+318	CB+318	3.0"	DN80	1.5"	DN40	8.0"	203.2 mm
QCB+328	CB+328	3.0"	DN80	2.0"	DN50	8.0"	203.2 mm
QCB+428	CB+428	4.0"	DN100	2.0"	DN50	8.0"	203.2 mm
QCB+4410	CB+4410	4.0"	DN100	4.0"	DN100	10.0"	254.0 mm
QCB+6410	CB+6410	6.0"	DN150	4.0"	DN100	10.0"	254.0 mm